



16th Annual
MOUNT SHASTA
“OPEN HEART”
SUMMER CONCLAVE
WITH THE
LIVING MASTER
SAINT GERMAIN

Where - Mount Shasta City and all around the Mount Shasta area

Who - Hosted by Saint Germain & volunteers

Cost - \$199.00 by June 30, 2014 or \$244.00 from July 1, 2014 / July 21st and 22nd (\$55 each day)

When - **July 18-20, 2014 with optional addition conclave dates of July 21st and 22nd**

Contact - SaintGmusic@gmail.com

Web - www.SaintGermainVioletFlame.com

Facebook - Ascended Master Saint Germain

This Year's Theme is Middle Earth Cities
(Agartha, Eden, Shamballah, Shangrila, Telos, Accacor, Maldekia)

What to Bring - good walking shoes or boots. Warm clothes and layering is essential when we are on the mountain at night (7000 foot elevation). Also bring shorts & swimsuit as the days are hot.

Purpose - Together in reverence, love and gratitude we upgrade our etheric body (light body), before the almighty Mount Shasta and connect at every multi-dimensional aspect of our true nature. The four cones of fire in the volcano, supply an immense abundance of electro-magnetic energies that allow grand transformations and miracles to take place, and even more magnified at the many portal spots we visit. Connecting with the mighty Brotherhood of Mount Shasta, the All-Consuming



Violet Flame, the Ancient Melchizedek Temple, the Pleiadians, Sirians & Venusian presence, the Akashic Records, Archangel Gabriel and consort Mother Hope and the eldest presence of Ra Mu & Rama Mu. Sharing the inner earth mysteries, we focus on Telos (the subterranean city) that is inside Mt. Shasta, with all its magical attributes. We also gather to anchor an “Etheric Violet Pillar” on Mount Shasta, for the upgrade of the world’s magnetic web or leylines, of the Seventh Golden Age of Aquarius, and for the Seventh Root Race. Through these actions, we gain so much more for our spirit, as our soul only registers “truth” through actual experiences. This is the 16th Annual Conclave here on the volcano, and the sole purpose and mission is for each soul to have his/her own magical precipitations, manifestations and transformations with fifth-dimensional (and higher) light frequencies. The reality is that the fifth dimension (oneness) has never left Mount Shasta. This electro-magnetic, four-coned volcanic vortex is a One-Of-A-Kind in the whole of the world. There are other sacred mountains of the world that hold fifth-dimensional frequencies, but Mount Shasta is the only place on Earth that expresses so many different multi-dimensional aspects and frequencies simultaneously, with an unparalleled acceleration and magnification. There are over 20 portals on & around the volcano.

Saint Germain guides and teaches through experience. This conclave has no classrooms, we meet each day and go from one portal to the next, in what he term's “Experiential Touring” to activate our consciousness at even a finer rate, and truly live the experience. To stand at the portals (gateways or doorways) and be in the sacred states of meditation, affirmation and visualization. Mystic inner journeys and high teachings are revealed, as we become part of the portals!

Mount Shasta is vibrating at such a fine degree, that if the protons were to spin at even just a slightly higher rate, the whole of Mount Shasta would literally be invisible, radiating at the higher dimensions. This is one of the world’s “Seven Sacred Mountains”. Come Embrace The Elder Crown Chakra of Lemuria and The Present-Day Crown Chakra of The Aquarian Age, MOUNT SHASTA!

Mount Shasta is the Home of:

- The Brotherhood of Mount Shasta
- The Violet Flame (Seventh Cosmic Ray)
- The Melchizedek Temple
- The Flower of Life Etheric Blueprint
- The Subterranean City of Telos
- The Portal to Shamballah (Middle Earth)
- The Gateway to the Garden of Eden (Middle Earth)
- Archangel Gabriel and Hope’s Etheric Retreat
- The Akashic Records
- Ra Mu (The Bringer of Light) and Rama Mu
- Saint Germain (The God of Freedom)
- The Pleiadians
- The Sirians
- The Venusians
- The Lemurian Pyramids and Stone Circles
- The Golden Etheric Domes of the South Slope
- The Lake of Gold Inside the Mountain
- The Hidden Valley
- and much more.....



Friday -

5:00 p.m. - Welcoming Dinner at Casa Ramos Restaurant. With warm greetings and introductions. Middle Earth overview with introduction to Telos, Ra Mu, Adama and on.

6:30 p.m. - Meet at the "Top Parking Lot" on Mount Shasta, 7770 ft. el. with views over 100 miles. Ra Mu & Rama Mu salutations and Archangel Gabriel and Mother Hope Invocation. Take Everett Memorial Highway (Lake Street) from Mount Shasta, to the Old Ski Bowl "Top Parking Lot". This is the highest point one can drive on Mount Shasta, and actually see the curvature of the Earth.

7:30 p.m. - To our camp at 7000 ft. Group Prayers and Invocations * Saint Germain plays sacred music

7:45 p.m. - Sacred Water Ceremony and Blessing, Shasta's water has the electronic-presence of the Violet Flame. This water flows to the Pacific Ocean and to the four-corners of the Earth.

8:15 p.m. - Violet Flame Mantras and Chanting around campfire at Saint Germain's camp lower on the mountain, 7000 foot approximately, dress very warm. Hear the story of Telos, Mt. Shasta subterranean city. Enjoy Chai Tea and Shasta's majesty and mystique at night.



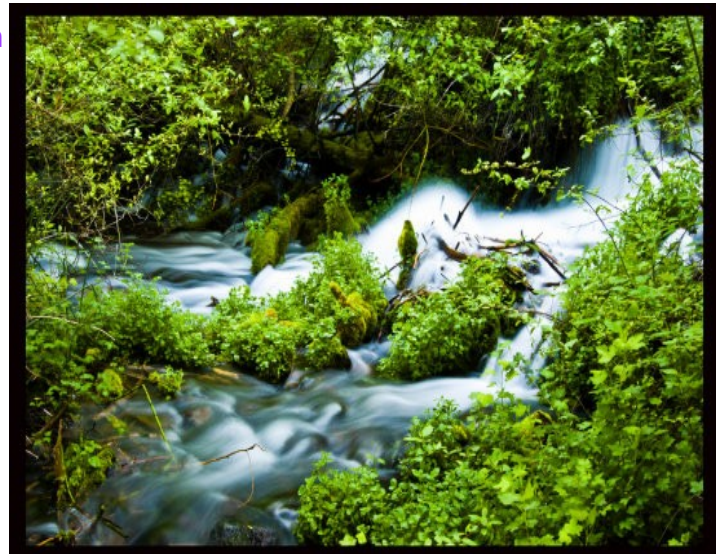
Saturday -

9:00 a.m. - Meet at Headwaters Spring at the City Park in Mt. Shasta to embark on journey to the Shasta Caverns

10:15 a.m. - 1:00 p.m. - Crystal Caves of Shasta Caverns, 7 different caverns full of golden-white calcite formations of every shape. The largest crystals are over 100 feet tall! There is also a fifth-dimensional portal at this site. (Moderate hiking here)

1:30 p.m. - 2:30 p.m. - lunch break

3:00 p.m. - Headwaters Spring Baptism of the Third-Eye, and Water Blessing to the World. This spring is the most sacred to the regional Native Americans. We will also be



acknowledging the local tribes of the: Karuk, Wintun, Ahjumawi, Modoc & Okwanuchu.

4:30 p.m. - (this is optional) The Gateway Peace Garden, we will connect with this Sacred Garden, that honors the Ascended Host of: Koot Hoomi (St Francis), Mother Mary, Quan Yin and features a replica of an ancient Labyrinth, a Peace Pole and Prayer Flag Station to make you own prayer flag and hang.

5:30 p.m. - dinner break

7:30 p.m. - 9:00 p.m. - Meet at the "Top Parking Lot" on Mount Shasta, for music, songs and mantras.

(Please go to Panther Meadows Spring and Meadow when the time allows. Truly a mystical and sacred spring)

Sunday -

10:00 a.m. - Meet at Castle Lake, we will connect with the Castle Crags Vortex, the Castle Lake Portal, and yet another subterranean complex, home to those of Maldek (Bigfoot) in one of the most beautiful alpine lake settings. This is an area known for sightings and inner-connections with Bigfoot/Sasquatch. We can also hike and swim here. Meditation and Peace is in a constancy, at this magical place.

12:00 p.m. - lunch break at Castle Lake

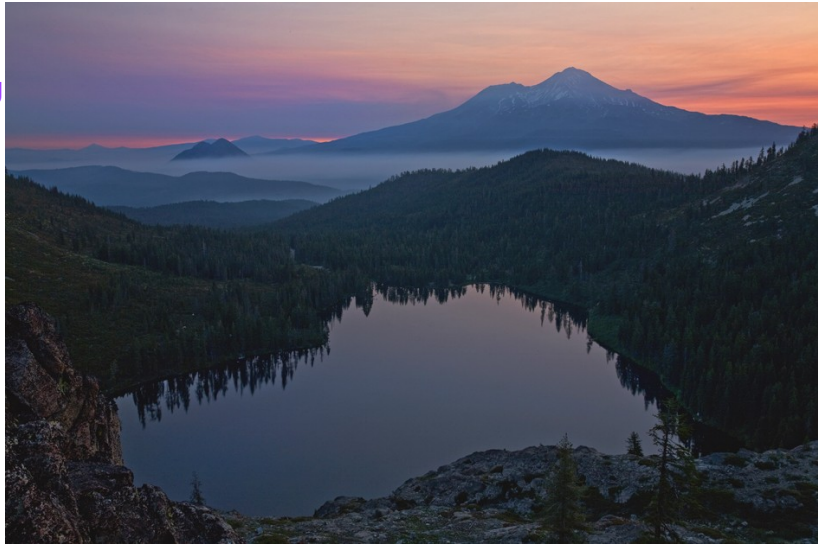
1:00 p.m. - McCloud Falls Portal - Journey into the Middle Earth via the fifth-dimensional doorway at McCloud's Middle Falls, we will embrace the majesty of this etheric-gate and have our own personal experience, a mystic's environment. Meditation & visualization (Easy to Moderate hiking here & swimming)

4:00 p.m. - Break for a surprise "sweet treat"

5:00 p.m. - dinner break

7:00 p.m. - Meet at the "Top Parking Lot" on Everett Memorial Highway for group meditation, affirmation and visualization. We will be able to explore this sacred area and really connect with the Earthly Mother, giving to her, as well as receiving. This is where we will be anchoring for the whole world, with the powerful "Etheric Violet Pillar Ceremony".

8:00 p.m. - 8:30pm- Sealing the energies and salutations to Archangel Gabriel & Lady Hope. And to Ra Mu & Rama Mu, and those of Telos.



Monday and/or Tuesday are also being offered (to other portals and caves) for those who are on the extended stay. These two days have a slightly shorter itinerary. You also have the option of camping high on Mt. Shasta for one or two nights, at Saint Germain's camp.

REGISTRATION:

Payment:

- * For July 18-20, 2014 ~ \$199.00 by June 30, 2014 or \$244.00 from July 1, 2014 and on
- * For additional one or two days of conclave, Monday July 21 and Tuesday July 22 are \$55 each day. These are slightly shorter days, on Monday and Tuesday we meet at 11:30am, leaving free time in the morning for ourselves and integration of energies.

To Register please email: Saintgmusic@gmail.com

Local attendees, please inquire about discount availability: SaintGmusic@gmail.com

Saint Germain prefers to serve in small groups, to be able to spend quality time with each and everyone. So there is a limited amount of reservations taken.

Included: Saint Germain's personal guidance to 7 different portals (Fifth Dimensional Doorways), with his personal teachings.

Travel, Accommodation and Meals are not included. Note: There is a \$22 admission fee for Shasta Caverns Crystal Caves...

~ ~ ~ ~ ~

Travel, Accommodation and Restaurant Tips:

Many people travel with friends to share RV, Van or Car rental, and share accommodation, i.e. a room with 2 beds; a rented house for a week, ect. Many motels offer weekly rates, like the Swiss Holiday Lodge (530.926.3446). Some motels have kitchenettes, so people can have the option of cooking their own meals.

Airports:

Redding, California is the closest airport, and then just rent a vehicle from there.

Estimated time (by car) from these airports, to Mt. Shasta:

- * Redding, California: 1 hour
- * Medford, Oregon: 1 ½ hours
- * Sacramento, California: 3 ¼ hours
- * San Francisco, California: 4 ½ hours
- * San Jose, California: 5 ¼ hours

Camping in Mount Shasta area:

The camping is really amazing here at Mt. Shasta:

- * Lake Siskiyou Campground (full amenities) with lake and views of the mountain, has a fee
- * K.O.A. Campground (has cabins and some amenities), has a fee
 - * Free Camping: Panther Meadows, Bunny Flat, Red Fir Flat (all of these campgrounds are high on Mt. Shasta, very primitive, but very beautiful.) Anyone can camp for free in the National Forest (which is all over the Mt. Shasta area)

Accommodation in Mount Shasta area:

- Travel Inn (simple)
- Swiss Holiday Lodge (simple, but with beautiful views)
- Cold Creek Inn (simple)
- Stewart Mineral Springs (Hotsprings with camping, tee-pees or rooms, 20 minutes away)

Higher-End Accommodation in Mount Shasta area:

- Strawberry Valley Inn (Bed and Breakfast) (quaint)
- Woodsman Hotel (has kitchenettes) ...continued...

Mount Shasta Resort (Chalets)
Best Western Tree House Motor Inn (has most amenities, indoor pool and spa, restaurant etc.)
Mt. Shasta Ranch Bed and Breakfast (beautiful views)
StoneyBrook Inn (in McCloud, 20 minutes away)

Organic Restaurants:

Berryvale Cafe, in Mt. Shasta
Trinity Café, in Mt. Shasta
Cornerstone, in Dunsmuir
Mountain Shadow Café, in McCloud
Nature's Kitchen, in Yreka

Other Restaurants in Mt. Shasta:

Andaman Healthy (Thai Cuisine)
Casa Ramos (Mexican)
Best Western Tree House Restaurant (American)
Lily's (International)
Mt. Shasta Resort Restaurant (International)

Natural Food Stores:

Berryvale, in Mt. Shasta
Nature's Kitchen, in Yreka

FOREVER FORGING FORTH FREEDOM'S FIREY, FLAWLESS, FORGIVENESS FLAME...

**Need more details? Want to bring Saint Germain to your city for a conference/concert?
Please Contact:**

SaintGmusic@gmail.com

Saint Germain's websites:

www.SaintGermainVioletFlame.com
www.SacredSoundSystem.org
www.InTheLightFestival.com

** We are the Alchemy! * Blessings & Love!*

LIST OF PORTALS TO VISIT:

1. Headwaters Spring
2. Panther Meadows Spring & Meadow
3. Shasta Caverns Crystal Caves
4. McCloud Middle Falls
5. Upper Ski Bowl Spring
6. Castle Lake
7. Pluto Cave Lava Tube
8. Chrysocola Hill

Optional Portals to Visit ~ Ancient Stone Circles, Temple of the Unfed Flame, Temple of Divine Union

Additional Conclave Dates, July 21 and 22 Itinerary:

Monday -

11:30 a.m. - Meet at Headwaters Spring at City Park, and go to Pluto Caves, an enormous lava tube on the north side of Mt. Shasta. Coming from an eruption 6,000 years ago, this was once a home for the Sasquatch. Giant White Owls and other animals still inhabit the caves. This northerly location gives us an opportunity to see the high desert region of Mt. Shasta, with amazing views. Please bring flashlights, headlamps or lanterns for the caves.

2:30 p.m. - Gem Gathering near one of Mt. Shasta's oldest cinder cones. We will go to Chrysocolla Hill and collect, chrysocolla, azurite, malachite, chalcopyrite, pink granite and more. Finding beautiful treasures at the foot of Mt. Shasta, that you can keep!

4:00 p.m. - Gateway Peace Garden Meditation, connecting with the elemental kingdom and anchoring the light of meditation, in this sacred place. Shasta Meadow too, truly a hidden gem in Mt. Shasta. Prayers & Nature!

5:30 p.m. - dinner break



Monday and/or Tuesday Night Camping on the mountain -

It is optional if you want to camp overnight, high on the mountain, Saint Germain will have a base-camp set-up at one of his favorite spots. Please dress warm! There will be tents, foam pad, shade canopy, stove, water and chai tea. Please be equipped with your own sleeping gear, extra blanket, food and extra water. Rentals for any gear is in the town of Mt. Shasta, easily accessible at "Base Camp", "Sportman's Den" or "The Fifth Season" and there are other stores.

Tuesday -

11:30 a.m. - Meet at the "Top Parking Lot" on Everitt Memorial Highway

12:00 p.m. - Medicine Wheel Ceremony with Invocations to the Four Directions and honoring the Native American Indians

1:00 p.m. - Ancient Native American Sacred Lodge Site. We will explore and have our own experience at this Native American Indian Ceremonial Site and receive healing from the sacred spring, and give blessings to the water, and to the world. Meditation is encouraged at this sacred site.

2:30 p.m. - Bigfoot (Sasquatch/Yeti) Ceremony and Invocations at Red Fir Flat. We will connect with our extended family of Bigfoot, or what is locally called "Takilmusie". Saint Germain has had many experiences with "Bigfoot" and one of his many books is about Bigfoot. Visit the sacred Ascension Rock.

4:00 p.m. - 5:30 p.m. - Meet at the "Top Parking Lot" for Interstellar Communication, Sun Ritual and Healing Ceremony. Music with didgeridoo, shruti box, djembe and other musical instruments played by Saint Germain. Closing circle and sealing the energies with a multitude of celestial salutes!

**16TH ANNUAL MOUNT SHASTA
"OPEN HEART" SUMMER CONCLAVE**

WITH THE LIVING MASTER

SAINT GERMAIN

When * July 18-20, 2014 (21 & 22 optional)

Where * Mount Shasta area

Who * Hosted by Saint Germain & volunteers

Cost * July 18-20 ~ \$199.00 by June 30, 2014 or
\$244.00 from July 1, 2014 and on

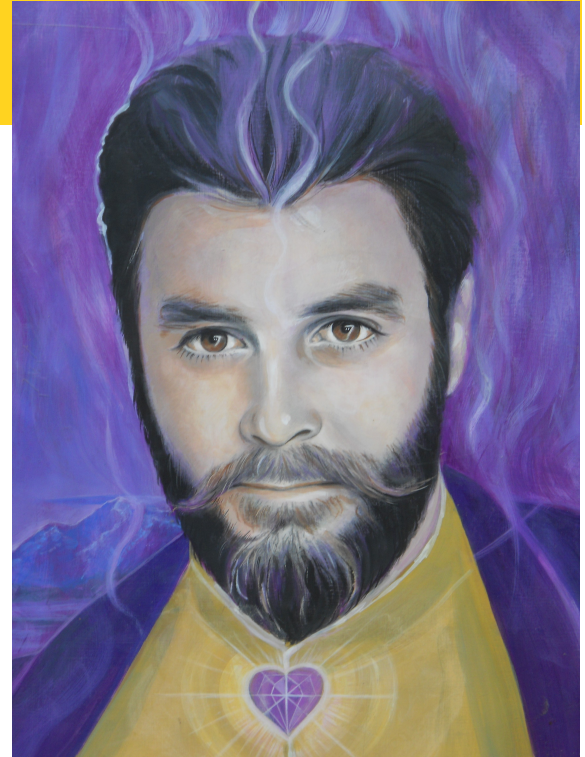
* For full itinerary/inquiries please email:
SaintGmusic@gmail.com

Web * www.SaintGermainVioletFlame.com

Web * www.SacredSoundSystem.org

Web * www.InTheLightFestival.com

FB * Ascended Master Saint Germain



******* THIS YEAR'S THEME IS "MIDDLE EARTH CITIES"*******

~ ~ Come embrace the majesty of Mount Shasta's most omnipresent features ~ ~

Brotherhood of Mount Shasta * Violet Flame (Seventh Cosmic Ray)
Melchizedek Temple * Flower of Life Etheric Blueprint
Telos, The Subterranean Lemurian City * The Subterranean Lake of Gold
Gateway to Shamballah and the original Garden of Eden (Middle Earth)
Archangel Gabriel and Mother Hope's Etheric Retreat
Akashic Records Storehouse * Mysterious Stone Circles (over 600)
Ra Mu "The Bringer of Light" (oldest being inside Mt. Shasta)
Ra Mu's divine consort, Mother Rama Mu
Saint Germain (The God of Freedom)
Pleiadians * Venusians * Arcturians * Orionids * Sirians
Temple of the Unfed Flame (Three-Fold Flame) * Temple of Divine Union
Golden Etheric Domes of the south slope
Giant Lemurian Pyramid on the west slope
Lava Tubes (over 700) * Ice Caves * Crystal Caves (100 foot crystals)
Ascension Rock * Lenticular Clouds and much more

**...As the soul only registers truth through experience, we embrace the
"Experiential Touring" to many fifth-dimensional portals/doorways around the
108 cubic mile, four-coned volcano and electro-magnetic vortex of Mt. Shasta...OM**